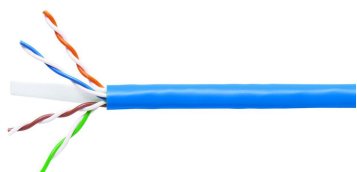


760004689 | 1071E BLU C6 4/23 U/UTP W1000



GigaSPEED XL® 1071E ETL Verified Category 6 U/UTP Cable, non-plenum, blue jacket, 4 pair count, 1000 ft (305 m) length, WE TOTE® box

Product Classification

| | |
|------------------------------|--|
| Regional Availability | Asia Australia/New Zealand Latin America North America |
| Portfolio | SYSTIMAX® |
| Product Type | Twisted pair cable |
| Product Brand | GigaSPEED XL® |
| Ordering Note | Not available in Europe, the Middle East, or Africa |

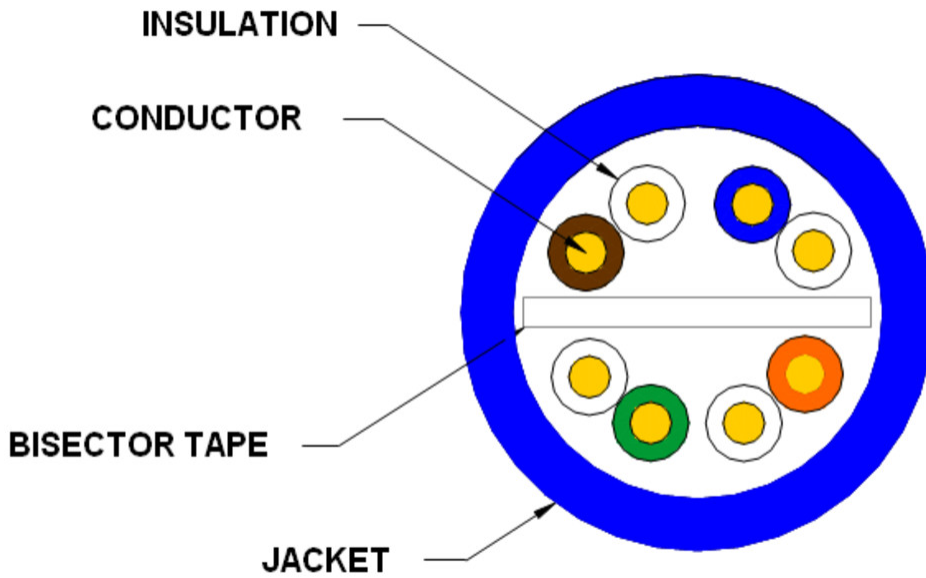
General Specifications

| | |
|--------------------------------|---|
| Product Number | 1071E |
| ANSI/TIA Category | 6 |
| Cable Component Type | Horizontal |
| Cable Type | U/UTP (unshielded) |
| Conductor Type, singles | Solid |
| Conductors, quantity | 8 |
| Jacket Color | Blue |
| Pairs, quantity | 4 |
| Separator Type | Bisector |
| Transmission Standards | ANSI/TIA-568.2-D CENELEC EN 50288-6-1 ISO/IEC 11801 Class E |

Dimensions

| | |
|--------------------------------------|---------------------|
| Cable Length | 304.8 m 1000 ft |
| Diameter Over Conductor | 1.029 mm 0.041 in |
| Diameter Over Jacket, nominal | 5.893 mm 0.232 in |
| Jacket Thickness | 0.559 mm 0.022 in |
| Conductor Gauge, singles | 23 AWG |

Cross Section Drawing



Electrical Specifications

| | |
|--|---|
| dc Resistance Unbalance, maximum | 5 % |
| dc Resistance, maximum | 7.61 ohms/100 m 2.32 ohms/100 ft |
| Dielectric Strength, minimum | 1500 Vac 2500 Vdc |
| Mutual Capacitance at Frequency | 5.6 nF/100 m @ 1 kHz |
| Nominal Velocity of Propagation (NVP) | 69 % |
| Operating Frequency, maximum | 300 MHz |
| Operating Voltage, maximum | 80 V |
| Remote Powering | Fully complies with the recommendations set forth by IEEE 802.3bt (Type 4) for the safe delivery of power over LAN cable when installed according to ISO/IEC 14763-2, CENELEC EN 50174-1, CENELEC EN 50174-2 or TIA TSB-184-A |

Material Specifications

| | |
|----------------------------|-------------|
| Conductor Material | Bare copper |
| Insulation Material | Polyolefin |
| Jacket Material | PVC |
| Separator Material | Polyolefin |

Mechanical Specifications

Pulling Tension, maximum 11.34 kg | 25 lb

Environmental Specifications

Installation temperature 0 °C to +60 °C (+32 °F to +140 °F)

Operating Temperature -20 °C to +60 °C (-4 °F to +140 °F)

Environmental Space Non-plenum

Temperature Rating, UL 75 °C | 167 °F

Flame Test Method CMG | CMR

Packaging and Weights

Cable weight 38.097 kg/km | 25.6 lb/kft

Packaging Type WE TOTE® box

Regulatory Compliance/Certifications

| Agency | Classification |
|---------------|--|
| ISO 9001:2015 | Designed, manufactured and/or distributed under this quality management system |
| REACH-SVHC | Compliant as per SVHC revision on www.commscope.com/ProductCompliance |
| ROHS | Compliant |

