

msi®



MOTHERBOARD

H110M PRO-VH



PRO Series

Making your life easier is our business

The PRO Series motherboards fit in any PC. Quality you can trust with top performance and clever business solutions are key aspects of these motherboards. Make your life easier and boost your business with the super stable, reliable and long-lasting PRO Series motherboards.



HDMI™
HIGH-DEFINITION MULTIMEDIA INTERFACE



a
Built
for
Small
Business



SBB SUPPORT



MILITARY CLASS 4

e
Power
&
Stability

b
4096
X
2160p



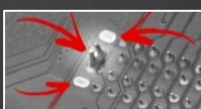
4K UHD DISPLAY



EZ DEBUG LED

f
Easy
Trouble-
shooting

c
35%
Stronger



VGA AMOR



DDR4 BOOST

g
Speed-
up
Memory

d
8-channel
7.1 HD

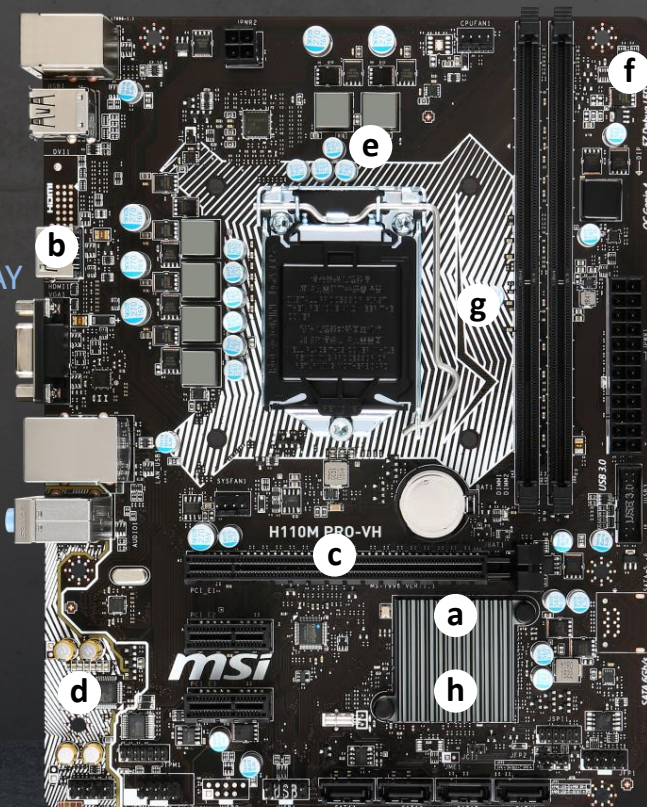


AUDIO BOOST



M-CLOUD

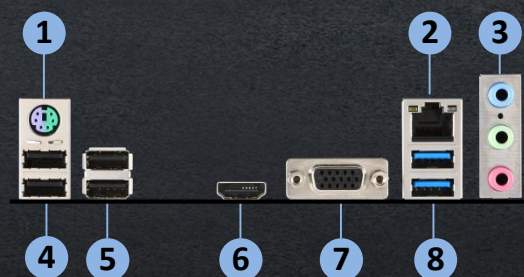
h
Personal
cloud
tool



SPECIFICATIONS

CPU support	6th Gen Intel® Core™ / Pentium® / Celeron® processors
CPU socket	LGA 1151
Chipset	Intel® H110 Chipset
Graphics interface	1 * PCI-E 3.0 x16
Display interface	HDMI, VGA – Requires Processor Graphics
Memory support	2 DIMMs, Dual Channel DDR4-2133 MHz
Expansion slots	2 * PCI-E x1
SATA	4 * SATA 6 Gb/s
USB	4 * USB 3.1 Gen1, 6 * USB 2.0
LAN	Realtek® Gigabit Ethernet
Audio	8-channel(7.1) HD Audio with Audio Boost
Others	COM pin header

I/O OVERVIEW



- | | |
|---------------------|-----------------------|
| 1. Mouse/Keyboard | 5. USB 2.0 ports |
| 2. LAN port | 6. HDMI port |
| 3. Audio connectors | 7. VGA port |
| 4. USB 2.0 ports | 8. USB 3.1 Gen1 ports |