



**MORE IMMERSIVE PROJECTION,
 LESS INTERFERENCE.**

For smooth, uninterrupted presentations, look no further than Epson's series of short-throw projectors. With short-throw projection ability, glare or shadow interference will no longer be a hindrance. Enjoy significant cost-savings as well, with 10,000 hours of lamp life in eco-mode. Complete with user-friendly interactive* features, Epson's short-throw projector series is your ideal choice.



EB-536Wi



EB-535W/525W/530/520

- Short Throw
- 10,000 Hours Lamp Life in Eco Mode
- Horizontal Keystone Adjuster*
- Multi-PC Projection
- HDMI
- Wi-Fi

ENGINEERED FOR BUSINESS

<p>Superb Short-throw Performance A throw ratio of 0.48 reduces glare and shadow interference, creating seamless presentations.</p>	<p>Enhanced Interactivity Features* Simply plug-and-play to start writing on the screen with the interactive pen, even without a PC.</p>	<p>Eco-friendly and Cost-efficient Save costs and energy consumption with 10,000 hours of lamp life in eco-mode.</p>
---	--	--



* Applicable for EB-536Wi only

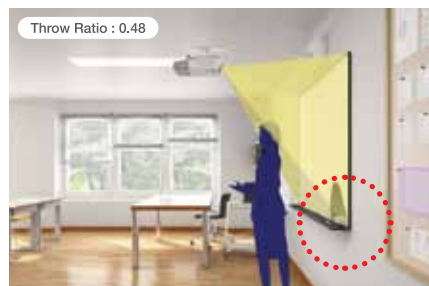
Project large screen sizes even at close range and make your presentations larger-than-life with Epson's short-throw projectors. Featuring versatile projection modes and flexible positioning, you can easily deliver wide projections with minimal shadow interference even within a limited space.



Superb Short-throw Performance

Impressive Screen Size at Close Range

Deliver uninterrupted presentations every time with Epson's short-throw projectors. This projector series boasts a throw ratio as low as 0.48, allowing you to project an 80-inch large screen from just 83cm away.



Epson's short-throw projector



Other projector

Reduced Shadow Interference & Minimised Glare

The short throw distance also significantly reduces glare on the presenter and shadow interference on the screen, making the viewing experience conducive and comfortable for everyone in the room.



Conventional projector with blinding glare on presenter's face

Epson's short-throw projector

Enhanced Interactivity Features*

Interactive Pen

Enliven your presentations with the projector's interactive function. The interactive pen provided effectively turns your screen into a large drawing board. You can freely annotate on projected content, making your presentations lively and highly engaging. The higher pen accuracy and response speed make drawing as instant as writing with a normal marker pen.

By connecting the projector to a PC via USB cable, you can use the interactive pen like a PC mouse to select and control elements on the screen for greater flexibility.



Two interactive pens can be used simultaneously for greater interactivity

PC-free Interactive Functionality

Write on the projector screen like a whiteboard, without a PC input source. With this original feature by Epson, you can annotate on screen without any PC connection to create compelling presentations. The PC-free Interactive mode also allows two people to write simultaneously, with two pens operating at the same time for greater interactivity.



On-screen Projector Operation

With on-screen projector operation, you'll be able to easily operate your projector even if the remote control is not close at hand. Perform basic projector operation functions such as power on, source change, volume adjustment and mute, simply by selecting the icons shown on the screen.



* Only applicable for EB-536Wi.

Extend your Interactive Reach

Get more out of your Interactive Pen with the Interactive Pen Extension**. With a longer pen, your interactive experience is enhanced as shadow interference is minimised even when the projector is placed on the table.



** Optional accessory

Ease of Set-up

Projector set-up is simply plug-and-play, with a one-time Auto Calibration and Auto Resolution Adjustment. No driver installation is required except for Mac OS users.



Calibration with interactive pen during setup can be skipped with the new auto calibration feature

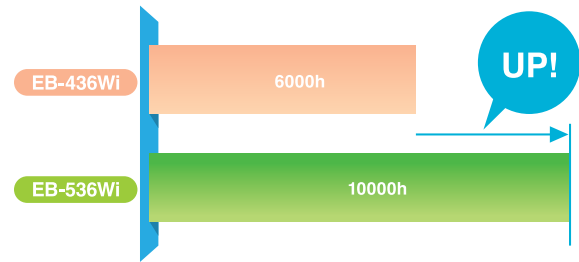


Users can advance straight to use the interactive feature with a click of the button

Eco-friendly and Cost-efficient

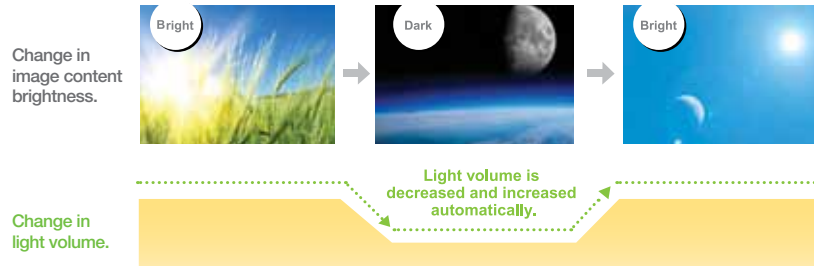
Longer Lamp Life

With a long lamp life of 10,000 hours in eco-mode, the frequency of costly lamp replacements is reduced, saving you time and money.



Light Optimiser

Save energy consumption and do your part for the environment with the eco-friendly Light Optimiser function. This feature automatically adjusts projection brightness according to image content brightness, giving you power and cost savings. This function can be turned on/off according to your preference.



Flexible Positioning

Effective Use of Space

Epson's short-throw projectors give you greater possibilities for all kinds of creative applications, even in areas with limited space. The projector can be mounted on a wall or set on a desktop and is effective on any surface, be it a flat wall, a whiteboard or even a chalkboard.



Projection on a whiteboard



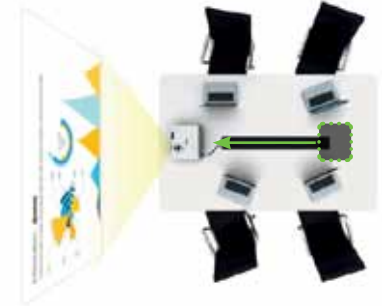
Paper pinned onto the whiteboard when the projector is switched off

This means you can maximise the use of limited classroom or office space by turning any existing board into a projection surface.

Despite the limited space, bright and large projections are still easily achievable.



Projection in meeting rooms with space constraint



Ease-of-Projection*

The Horizontal Keystone Adjuster and Auto Vertical Keystone features allow you to quickly and intuitively correct any projection image slant due to projector placement angle. Calibration for interactivity is also quick and easy. Simply press the Auto Calibration button for 3 seconds and you can begin to use the interactive pens for your presentation right away.



Remove projector from carrying case**



Keystone correction with Horizontal Keystone Adjuster & Auto Vertical Keystone



One Push Auto Calibration



Begin presentation with interactive functions

* Only applicable for EB-536Wi.

** Carrying case is sold separately

Wide Range of Connectivity

Full Compatibility

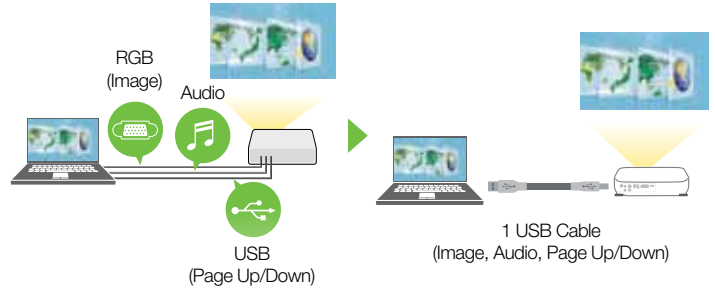
Advanced connectivity features mean convenient and hassle-free projections of your presentations. With wide-ranging interfaces, these projectors not only correspond with multiple conventional analogue sources, they are also compatible with HDMI input.



HDMI™
HIGH-DEFINITION MULTIMEDIA INTERFACE

USB 3-in-1 Display

Image projection, sound transmission and mouse operation can all be conveniently carried out with a single USB connection, eliminating the hassle of separate and messy cabling.



EasyMP Network Projection

The EasyMP Network Projection enables users to configure both wired and wireless connections with high-quality audio output and conduct meetings simultaneously in up to four different locations.

EasyMP Monitor

The EasyMP Monitor lets you efficiently monitor and configure multiple networked projectors from a single PC. You also have the ability to broadcast messages to all projectors for announcements or emergencies.



Epson iProjection*

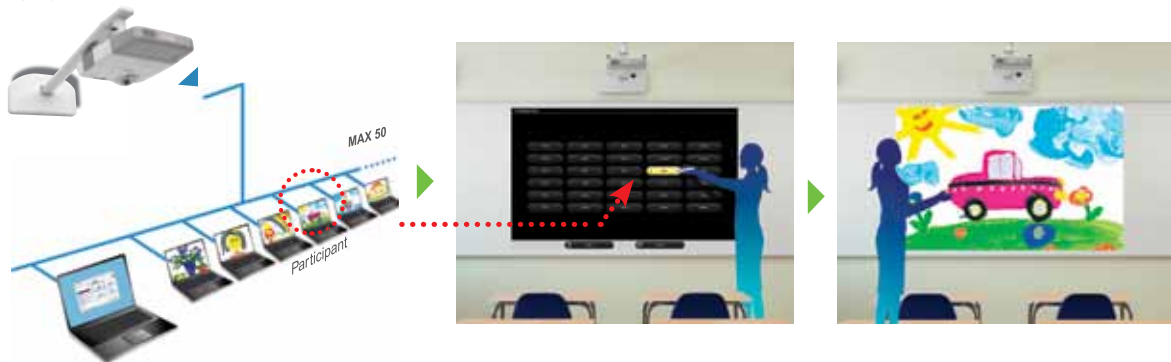
With the iProjection application for both iOS and Android, wireless projection from a smart device is made possible. This feature supports various files and allows you to present your smartphone contents with ease. iProjection also corresponds with your smartphone's touch-screen operations, such as flicking to turn pages and pinching to zoom in or out.



* In iProjection, projector profile search, multi-screen display, distribution function, audio transfer, movie file transfer, interrupt connection disabling and encryption data transfer capabilities are not supported.

Multi-PC Projection

With the control of a host PC, up to 50 terminals can be connected via the multi-PC projection to a single projector. The host PC acts as a moderator, selecting media from up to four PCs or smart devices to be projected simultaneously. With the moderator function, you can maintain control and prevent tampering of what's projected on screen.



Eco Features

- Uses just 0.28W of power in standby mode
- Projector optics employ lead-free lenses
- Unpainted plastic housing reduces the environment impact
- The flame retardants used in the plastic housing do not contain chlorine or bromine
- Light Optimiser function helps to reduce power consumption usage.

Better Products for a Better Future™

For more information on Epson's environmental programmes, visit <http://global.epson.com/SR/environment>.

PARTNERS IN PERFECTION

Short-throw Wall Mount ELPMB45



Arm Length: 1,510mm
Weight: approx. 11kg
Maximum Load Capacity: 5.5kg
Supported Projection Screen Size:
66" - 110" (WXGA model)

Wireless LAN Adaptor ELPAP07



Supports 802.11 b/g/n connection
Compatible with all Epson wireless-enabled projectors

Desktop Document Camera ELPDC20



3kg / 6.6lbs
2 megapixels with 30fps
12X optical zoom
1080p output resolution
HDMI digital connectivity



SEE VIBRANT, REALISTIC COLOURS WITH HIGH COLOUR BRIGHTNESS.

A New Specification

Projectors have always had their brightness rated only for white light. However, they may have very different colour brightness levels. The Colour Brightness specification provides a new way for buyers to compare the holistic performance (white and colour light brightness) of projectors to make a more informed decision.



Epson
Colour Brightness 2600 Lumens
White Brightness 2600 Lumens

Competitor
Colour Brightness 750 Lumens
White Brightness 2700 Lumens

What is Colour Brightness?

As the term implies, Colour Brightness is a new international standard that states a projector's colour light output in lumens. It measures the brightness of a projector's red, green and blue light.

These are the measurements to look for:

Colour Brightness - Colour Light Output

White Brightness - White Light Output



Epson

Competitor

* Compared against similarly-priced leading 1-chip DLP® business and education projectors based on NPD data from July 2011 through June 2012 (available from www.npd.com). Colour brightness (colour light output) measured in accordance with IDMS 15.4. Actual colour brightness will vary depending on actual usage conditions. 3LCD® is a registered trademark of Seiko Epson Corporation. DLP® is a registered trademark of Texas Instruments, Inc. and its use here does not imply any affiliation with or endorsement by them.

Why Does Colour Brightness Matter?

Even if a projector has high white brightness, its Colour Brightness could be as low as 1/3 of its white light brightness specification. With a projector that has high Colour Brightness, you'll see vibrant, realistic colours; but if Colour Brightness is low, colours can look dull and dark, skin tones can be reproduced poorly and important details can be lost.

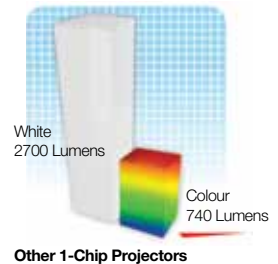
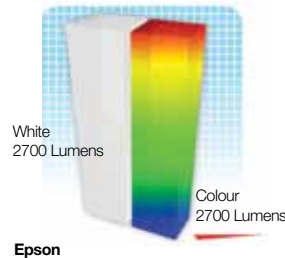


Epson

Competitor

How to Find a Projector's Colour Brightness?

1. Look for separate Colour Brightness and white brightness specification.
2. Projectors with similar white brightness levels can have vastly different and significantly lower Colour Brightness levels.
3. Many manufacturers may not want you to know their projectors are only 1/3 as bright when measuring colour.



www.epson.com.sg/colourbrightness

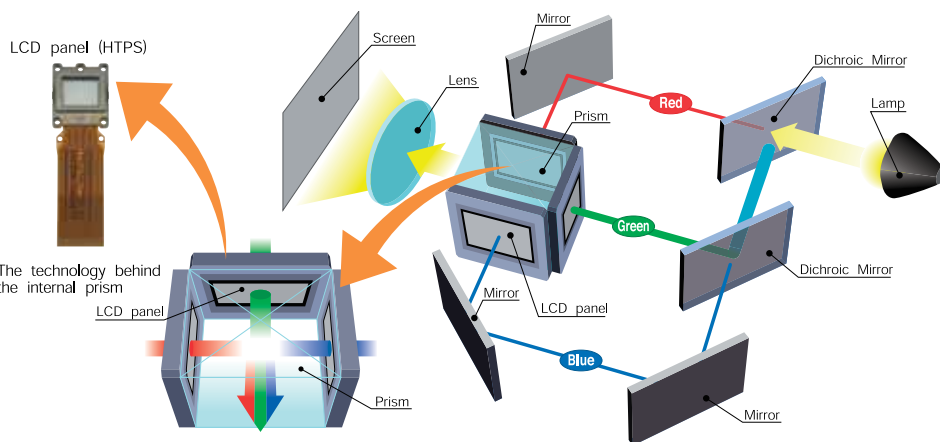
EPSON 3LCD TECHNOLOGY – FOR BRIGHT, FAITHFUL COLOURS

3LCD projectors offer brighter and more accurate colours as they produce different shades and hues by filtering, then mixing beams of the three primary colours (red, green and blue).

In a 3LCD projector, white light is first split into the three beams of primary colours. Each beam is then filtered through its own LCD that will give each individual pixel of the image its exact brightness for each colour. The colour beams are then perfectly recombined in a prism before being projected out as a complete image.

This compares to projectors using single-chip technology that actually project individual colours sequentially by filtering their single white light beam through a colour wheel, and then relying on human colour perception to combine the colours in the viewers' minds.

As a result, 3LCD projectors also offer greater detail, smoother gradations, no "colour breakup" effect, are easier on viewers' eyes, and consume about 25% less power to achieve the same brightness compared to a single-chip projector using a lamp of the same wattage.



3LCD projector : RGB are projected at the same time, which makes the single composite image easy on the eyes.

• An independent test by projector review media ProjectorCentral.com in 2009 of about 800 projectors found that on average, 3LCD projectors use 25% less power than single-chip projectors.



www.3lcd.com

MODEL NUMBER	EB-536Wi	EB-535W	EB-525W
Projection Technology	RGB liquid crystal shutter projection system (3LCD)		
Specifications of Main Parts			
LCD	Size	0.59" with MLA (D8)	
	Native Resolution	WXGA	
Projection Lens	Type	No Optical Zoom / Focus (Manual)	
	F-Number	1.60	
	Focal Length	6.4mm	
	Zoom Ratio	1.0 - 1.35 (Digital Zoom)	
Lamp	Throw Ratio	0.48 - 0.65 (Wide - Tele)	
	Type	215W UHE	200W UHE
	Life (Normal / Eco) ¹	5,000 hours / 10,000 hours	
Screen Size (Projected Distance)			
Zoom: Wide / Zoom: Tele	53" - 116" [0.54 - 1.22 m] / 39" - 86" [0.54 - 1.22 m]		
Brightness²			
White Light Output (Normal / Eco)	3,400lm / 1,900lm		2,800lm / 1,700lm
Colour Light Output (Normal)	3,400lm		2,800lm
Contrast Ratio	16,000:1		
Internal Speaker(s)			
Sound Output	16W Monaural		
Keystone Correction			
Vertical / Horizontal	±7° / ±5°	±15° / ±15°	
Auto Keystone Correction	Yes (Vertical)	N/A	
Connectivity			
Analog RGB Input	D-Sub 15Pin	2 (Blue)	
	Composite	RCA x 1 (Yellow)	
	S-Video	1	
Digital Input	HDMI	1	
Audio Input	RCA (White/Red)	Yes	
	Stereo Mini Jack	2	
USB Input	USB Type A	1 (for USB Memory, USB Document Camera, Wireless LAN, Firmware Update, Copy OSD Settings)	
	USB Type B	1 (for USB Display, Mouse, K/B, Control, Firmware Update, Interactive, Copy OSD Settings)	1 (for USB Display, Mouse, K/B, Control, Firmware Update, Copy OSD Settings)
Control I/O	RS-232C	D-Sub 9pin x 1	
	Interactive Sync	In x 1; Out x 1	N/A
Video Output	Monitor Out	1	
Audio Output	Stereo Mini Jack	1	
Mic Input	Stereo Mini Jack	1	
Network	Wired LAN	RJ45 x 1 (100Mbps)	
	Wireless LAN	Optional (ELPAP07)	
Interactive Specification			
Interactive Unit			
Supported Screen Size	53" - 116" [0.54 - 1.22 m] (Zoom: Wide) 40" - 86" [0.54 - 1.22 m] (Zoom: Tele)	N/A	
Technology	Infrared	N/A	
Input Devices	Digital Pen (Easy Interactive Pen A and B)	N/A	
Connection To Computer	USB	N/A	
Supports Multiple Input Simultaneously	Yes	N/A	
Calibration	Auto, Manual (25 Points)	N/A	
Pen Unit			
Size	161 x 24 mm Dia. (maximum)	N/A	
Weight (Excluding Batteries)	30g	N/A	
Side Button	Yes	N/A	
PC Free Annotation Tool			
Driver Install	No Need	N/A	
Multi Pen Support	Yes Up To 2 Types Of Pens (Easy Interactive Pen A and B)	N/A	
Whiteboard Function	Yes	N/A	
Operating Temperature	5 - 35 °C <41 - 95 °F>		
Operating Altitude	0 - 3,000 m <0 - 9,843 ft>		
Direct Power On / Off	Yes		
Start-Up Period	Less than 7 seconds, Warm-up period: 30 seconds		
Cool Down Period	Instant Off		
Power Supply Voltage	100 - 240 V AC ±10%, 50/60 Hz		
Power Consumption (220 - 240V)			
Lamp On (Normal / Eco)	298W / 221W	278W / 219W	
Standby (Normal / Eco)	2.1W / 0.28W		
Dimension Excluding Feet (D X W X H)	314.5 x 344 x 94 mm		
Weight	3.9kg	3.7kg	
Fan Noise (Normal / Eco)	37dB / 29dB	35dB / 28dB	

Supplied Accessories

Power Cable: 4.5m
Remote Control: Yes, with Alkaline AA Battery
Computer Cable (VGA Cable): 1.8 m (EB-535W/EB-525W)
Interactive Pen x 1 (EB-536Wi)
USB cable: 5m (EB-536Wi)
Software CD-ROM

Optional Accessories

Spare Lamp: ELPLP87
Air Filter: ELPAF47
Soft Carrying Case: ELPKS66
Wireless LAN Unit: ELPAP07
Quick Wireless Connection USB Key: ELPAP09
ELPKC28 Interactive IR Synchronization (EB-536Wi)
ELPKC31 USB Extension Cable
ELPPE02 Pen Extension (EB-536Wi)
ELPMB45 Short Throw Wall Mount

EB-536Wi



EB-535W / EB-525W



¹ Lamp life will vary depending upon mode selected, environmental conditions and usage. Lamp brightness decreases over time.
² Colour brightness (colour light output) and white brightness (white light output) will vary depending on usage conditions. Colour light output measured in accordance with IDMS 15:4; white light output measured in accordance with ISO 21118.

© 2015 Epson India Pvt. Ltd. All Rights Reserved. Reproduction in part or in whole, without the written permission from Epson, is strictly prohibited.

EPSON and EXCEED YOUR VISION are registered trademarks of Seiko Epson Corporation.

All other product names and other company names used herein are for identification purposes only and are the trademarks or registered trademarks of their respective owners.

Epson disclaims any and all rights in those marks. Projected images shown herein are simulations. The actual product design and contents may vary. Specifications are subject to change without notice and may vary between countries. Please check with local Epson offices for more information.

Apple, iPad and iPhone are trademarks of Apple Inc., registered in the U.S. and other countries. App Store is a service mark of Apple Inc.

Android is a trademark of Google Inc.

Information correct as at April 2015

EPSON INDIA PVT. LTD.

12th Floor, The Millenia, Tower A, No.1,
Murphy Road, Ulsoor, Bangalore - 560 008.
Tel: 080-30515000 Fax: 080-30515005

Regional Offices:

Ahmedabad - 3314 8500/01, Chennai - 3967 7500, Cochin - 4012315, Coimbatore - 98942
19200, Indore - 4701830, Kolkata - 65009370/77, Mumbai - 3079 8200, New Delhi - 3312
0300/01, Pune - 3028 6000/05, Hyderabad - 6463 9640/41



Epson Helpline:

For product info or service - 1800 425 0011
For service - 1860 3000 1600 (9AM - 6PM) (Mon - Sat)

www.epson.co.in

Dealer's Stamp



Official Partner
of Manchester United

MODEL NUMBER	EB-530	EB-520
Projection Technology	RGB liquid crystal shutter projection system (3LCD)	
Specifications of Main Parts		
LCD	Size	0.55" with MLA (D8)
	Native Resolution	XGA
Projection Lens	Type	No Optical Zoom / Focus (Manual)
	F-Number	1.60
	Focal Length	6.4mm
	Zoom Ratio	1.0 - 1.35 (Digital Zoom)
Lamp	Throw Ratio	0.55 - 0.74 (Wide - Tele)
	Type	215W UHE 200W UHE
	Life (Normal / Eco) ¹	5,000 hours / 10,000 hours
Screen Size (Projected Distance)		
Zoom: Wide / Zoom: Tele	50" - 108" [0.54 - 1.22 m] / 37" - 80" [0.54 - 1.22 m]	
Brightness²		
White Light Output (Normal / Eco)	3,200lm / 1,800lm	2,700lm / 1,600lm
Colour Light Output (Normal)	3,200lm	2,700lm
Contrast Ratio	16,000:1	
Internal Speaker(s)		
Sound Output	16W Monaural	
Keystone Correction		
Vertical / Horizontal	±15° / ±15°	
Connectivity		
Analog RGB Input	D-Sub 15Pin	2 (Blue)
	Composite	RCA x 1 (Yellow)
	S-Video	1
Digital Input	HDMI	1
Audio Input	RCA (White/Red)	Yes
	Stereo Mini Jack	2
USB Input	USB Type A	1 (for USB Memory, USB Document Camera, Wireless LAN, Firmware Update, Copy OSD Settings)
	USB Type B	1 (for USB Display, Mouse, K/B, Control, Firmware Update, Copy OSD Settings)
Control I/O	RS-232C	D-Sub 9pin x 1
Video Output	Monitor Out	1
Audio Output	Stereo Mini Jack	1
Mic Input	Stereo Mini Jack	1
Network	Wired LAN	RJ45 x 1 (100Mbps)
	Wireless LAN	Optional (ELPAP07)
Operating Temperature	5 - 35 °C <41 - 95 °F>	
Operating Altitude	0 - 3,000 m <0 - 9,843 ft>	
Direct Power On / Off	Yes	
Start-Up Period	Less than 7 seconds, Warm-up period: 30 seconds	
Cool Down Period	Instant Off	
Power Supply Voltage	100 - 240 V AC ±10%, 50/60 Hz	
Power Consumption (220 - 240V)		
Lamp On (Normal / Eco)	298W / 221W	278W / 219W
Standby (Normal / Eco)	2.1W / 0.28W	
Dimension Excluding Feet (D X W X H)	314.5 x 344 x 94 mm	
Weight	3.7kg	
Fan Noise (Normal / Eco)	37dB / 29dB	35 dB / 28 dB

Supplied Accessories

Power Cable: 4.5m
Remote Control: Yes, with Alkaline AA Battery
Computer Cable (VGA Cable): 1.8 m
Software CD-ROM

Optional Accessories

Spare Lamp: ELPPLP87
Air Filter: ELPAF47
Soft Carrying Case: ELPK566
Wireless LAN Unit: ELPAP07
Quick Wireless Connection USB Key: ELPAP09
ELPMB45 Short Throw Wall Mount

EB-530W / EB-520W



- ¹ Lamp life will vary depending upon mode selected, environmental conditions and usage. Lamp brightness decreases over time.
- ² Colour brightness (colour light output) and white brightness (white light output) will vary depending on usage conditions. Colour light output measured in accordance with IDMS 15:4; white light output measured in accordance with ISO 21118.

© 2015 Epson India Pvt. Ltd. All Rights Reserved. Reproduction in part or in whole, without the written permission from Epson, is strictly prohibited.

EPSON and EXCEED YOUR VISION are registered trademarks of Seiko Epson Corporation.

All other product names and other company names used herein are for identification purposes only and are the trademarks or registered trademarks of their respective owners.

Epson disclaims any and all rights in those marks. Projected images shown herein are simulations. The actual product design and contents may vary. Specifications are subject to change without notice and may vary between countries. Please check with local Epson offices for more information.

Apple, iPad and iPhone are trademarks of Apple Inc., registered in the U.S. and other countries. App Store is a service mark of Apple Inc.

Android is a trademark of Google Inc.

Information correct as at April 2015

EPSON INDIA PVT. LTD.

12th Floor, The Millenia, Tower A, No.1,
Murphy Road, Ulsoor, Bangalore - 560 008.
Tel: 080-30515000 Fax: 080-30515005

Regional Offices:

Ahmedabad - 3314 8500/01, Chennai - 3967 7500, Cochin - 4012315, Coimbatore - 98942
19200, Indore - 4701830, Kolkata - 65009370/77, Mumbai - 3079 8200, New Delhi - 3312
0300/01, Pune - 3028 6000/05, Hyderabad - 6463 9640/41



Epson Helpline:

For product info or service - 1800 425 0011
For service - 1860 3000 1600 (9AM - 6PM) (Mon - Sat)

www.epson.co.in

