

Cisco CVR100W Wireless-N VPN Router with Highly Secure Business-Class Connectivity for Small Offices/Home Offices (SOHO)



The Cisco® CVR100W Wireless-N VPN Router provides easy-to-use, affordable, and highly secure connectivity for small office/home office (SOHO) users.

The Cisco CVR100W features standard-based 802.11n wireless connectivity and four 10/100 Fast Ethernet LAN interfaces. Intuitive quick setup wizards, Cisco Simple Connect technology, and physical Wi-Fi/Do-Not-Disturb mode buttons (to temporarily disable the Wi-Fi network or front panel lights) simplify router configuration and network maintenance. VPN capabilities provide a business-class secured connection to remote offices or employees as if they were physically attached to the network. Wireless guest access control, proven stateful packet inspection (SPI) firewall, quality of service (QoS), and IPv6 support deliver a quality user experience and future network compatibility.

Features and Benefits

- **High-speed networking:** Four integrated 10/100 Fast Ethernet LAN interfaces provide high-speed access for network devices such as computers, network-attached storage (NAS), IP phones, and cameras. High-speed, standard-based 802.11n wireless connectivity with two built-in omnidirectional antennas helps employees stay productive while away from their desks.
- **Ease of use:** Cisco Simple Connect technology allows Android and iOS smart devices to access the Internet without the need to manually type a password. The Wi-Fi control button allows you to enable or disable the wireless function with just one click. The Do Not Disturb button turns the LEDs on the front panel on and off to avoid light pollution and be more energy efficient.
- **Secured connection:** VPN remote access allows remote workers to securely access corporate resources over IP Security (IPsec) VPN tunnels with Cisco QuickVPN software. IPsec site-to-site VPN provides highly secure connectivity between remote offices and headquarters.

- **Business-grade features:** Support for multiple VLANs enables you to segregate the network into LANs that are isolated from one another, using service set identifiers (SSIDs). This feature enables you to control access to sensitive information and to set up highly secure wireless guest access. A proven SPI firewall and advanced wireless security, plus strong URL filtering and access control by schedule, help keep business assets safe.
- **Future network readiness:** Support for IPv6 addressing helps small businesses comply with upcoming network standards and prepare for building a next-generation network.

Cisco CVR100W Front Panel

Figure 1 shows the front panel of the Cisco CVR100W. There are three function buttons and eight indicators on the front panel.

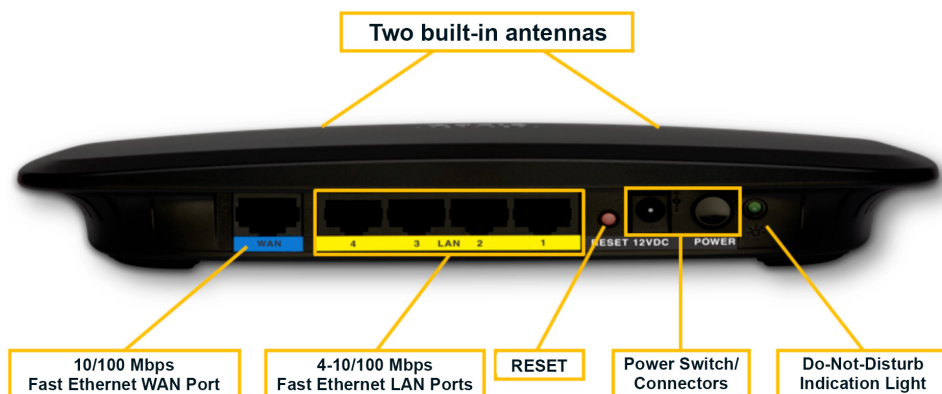
Figure 1. Cisco CVR100W Front Panel



Cisco CVR100W Back Panel

Figure 2 shows the back panel of the Cisco CVR100W.

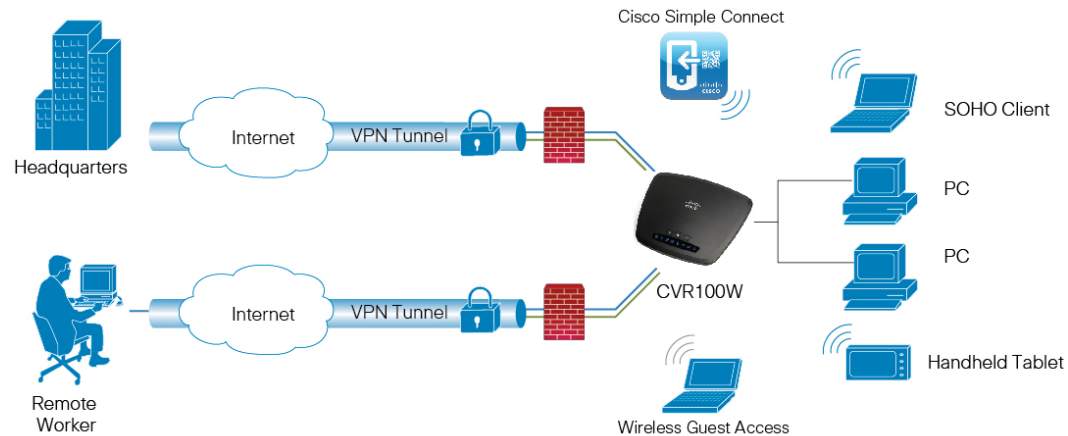
Figure 2. Cisco CVR100W Back Panel



Typical Applications

Figure 3 shows typical applications for the Cisco CVR100W.

Figure 3. Cisco CVR100W Wireless-N VPN Router



1. Built-in standard-based 802.11n wireless access point with 2x2 multiple-input and multiple-output (MIMO) technology, providing a data rate of up to 300 Mbps.
2. Ability to set up highly secure wireless guest access and separate guest traffic.
3. Business-class SPI firewall with denial-of-service (DoS) prevention, URL filtering, and access control by schedule.
4. Support for up to three client-to-gateway VPN tunnels to facilitate branch office connectivity through encrypted virtual links.
5. Support for Cisco Simple Connect technology, providing a secure and convenient way for smart devices to connect with a Wi-Fi access point.

System Specifications

Table 1 lists the hardware specifications for the Cisco CVR100W.

Table 1. System Specifications

Features	Description
WAN	One 10/100 Mbps RJ-45 connector for WAN port
LAN	Four 10/100 Mbps RJ-45 connectors for LAN ports
Wireless	Built-in 802.11n wireless access point (two antennas)
LED	LAN1-4, WPS, Wireless, WAN, Power, and Do-Not-Disturb indication
Buttons/switches	Power, RESET, WPS, Wireless, and Do-Not-Disturb mode control
Do-Not-Disturb button	The Do-Not-Disturb button is used to turn the LEDs on the front panel on and off. Turning this button on or off will not affect the normal operation of the CVR100W. <ul style="list-style-type: none">• When this button is turned on, all lights on the front panel are off and the Do-Not-Disturb indication light on the back panel is solid green.• When this button is turned off, all lights on the front panel are on and the Do-Not-Disturb indication light on the back panel is off.
Product dimensions (W x H x D)	8.02 in. x 6.67 in. x 1.39 in. (203.7 mm x 169.3 mm x 35.4 mm)
Weight	0.84 lb (0.38 kg)
Power supply	12V/0.5A
Cabling type	Category 5e or better

Features	Description
Certifications	SRRC, CE, CB, Wi-Fi
Operating environments	<ul style="list-style-type: none"> • Operating temperature: 0° to 40°C (32° to 104°F) • Storage temperature: –30° to 60°C (–22° to 140°F) • Operating humidity: 10% to 85% noncondensing • Storage humidity: 5% to 95% noncondensing

Product Specifications

Table 2 lists the software specifications for the Cisco CVR100W.

Table 2. Product Specifications

Features	Description
Routing	<ul style="list-style-type: none"> • Static routing • Routing Information Protocol (RIP) versions 1 and 2 • Inter-VLAN routing
Layer 2	<ul style="list-style-type: none"> • 802.1Q-based VLAN • 6 active VLANs (VLAN ID Range: 4 to 4094)
Layer 3	<ul style="list-style-type: none"> • Dynamic Host Configuration Protocol (DHCP) Server • Point-to-Point Protocol over Ethernet (PPPoE) • Point-to-Point Tunneling Protocol (PPTP) pass-through • Layer 2 Tunneling Protocol (L2TP) pass-through • DHCP relay agent • IGMP proxy and snooping • Dynamic Domain Name System (DynDNS): oray.com and 3322.org • Network Access Translation (NAT) and Port Address Translation (PAT) • Port management • Port mirroring
IPv6	<ul style="list-style-type: none"> • IPv4/IPv6 dual stacks • IPv6 to IPv4 tunneling • Multicast Listener Discovery (MLD) for IPv6 (RFC2710) • Stateless address auto-configuration (SLAAC) • DHCPv6 Server for LAN IPv6 clients • DHCPv6 Client WAN connection • Internet Control Message Protocol (ICMP) version 6 • IPv6 static routing • RIP Next Generation (RIPng): IPv6 Dynamic Routing
Security	<ul style="list-style-type: none"> • Stateful packet inspection (SPI) firewall • Port forwarding and port triggering • Access control lists (ACL) and content filtering • DoS prevention • Wireless MAC address filtering • Static URL or keyword filtering • Access control by schedule • Web-based configuration utility (HTTP and HTTPS) • Self-signed SSL certificate
VPN	<ul style="list-style-type: none"> • Up to 3 IPsec VPN tunnels by using the Cisco QuickVPN software • PPTP, L2TP, and IPsec VPN passthrough • 1 IPsec site-to-site tunnel
Quality of service	<ul style="list-style-type: none"> • 802.1p-based priority on LAN ports and application-based priority on WAN ports • 4 queues • Differentiated services code point (DSCP) • Class of service (CoS) • Bandwidth control

Features	Description
Management	<ul style="list-style-type: none"> • Local logs, system logs, and remote logs • Upgrade the firmware from the web-based device manager • Import and export system configuration (.txt) • Remote management using the HTTP or HTTPS protocol • Bonjour and Universal Plug and Play (UPnP) • Network diagnostics: Ping, traceroute, and DNS lookup
Performance	<ul style="list-style-type: none"> • NAT throughput: 90 Mbps • Maximum new connections: 750 • Maximum concurrent connections: 15,000 • VPN throughput: 5 Mbps

Wireless Specifications

Table 3 lists the wireless specifications for the Cisco CVR100W.

Table 3. Wireless Specifications

Features	Description
Wireless radio	<p>IEEE 802.11n wireless access point; complies with 802.11b/g</p> <p>Wireless radio modes:</p> <ul style="list-style-type: none"> • 802.11b: Direct-Sequence Spread Spectrum (DSSS) • 802.11g/n: Orthogonal Frequency-Division Multiplexing (OFDM) • 2 built-in omnidirectional antennas with 1.8 dBi gain <p>Wireless channels:</p> <ul style="list-style-type: none"> • 13 selectable wireless channels • Automatic channel selection <p>Transmit power:</p> <ul style="list-style-type: none"> • 802.11b: 17 dBm +/- 1.5 dBm • 802.11g: 15 dBm +/- 1.5 dBm • 802.11n: 12.5 dBm +/- 1.5 dBm <p>Receiver sensitivity:</p> <ul style="list-style-type: none"> • -87 dBm at 11 Mbps • -71 dBm at 54 Mbps • -68 dBm at msc15, HT20; -66dBm at mcs15, HT40
Wireless adjustment	<ul style="list-style-type: none"> • Press the Wireless button to enable or disable the wireless module • Adjustable Wi-Fi power: OFF, 50%, 100%
Wireless Distribution System (WDS)	Up to 3 wireless access points to repeat the wireless signals
Wi-Fi Multimedia (WMM)	WMM (802.11e) and WMM Power Save (U-APSD)
Maximum number of connected wireless client stations	32 active wireless client stations simultaneously
Maximum number of active SSIDs	4 active SSIDs simultaneously
Isolation	Station isolation
Security	<ul style="list-style-type: none"> • Wi-Fi Protected Setup (WPS) 2.0 • Wired Equivalent Privacy (WEP) • Wi-Fi Protected Access (WPA)-Personal/Enterprise • WPA2-Personal/Enterprise
Cisco Simple Connect	Provides a safe and convenient way for smart devices to connect internet via CVR100W.

Cisco Simple Connect

The Cisco CVR100W supports Cisco Simple Connect technology, which provides a safe and convenient way for smart devices to connect with a Wi-Fi access point simply by touching the RFID or scanning the QR code of the Cisco Simple Connect tag. A QR code for the Cisco Simple Connect tag can be generated at

www.cisco.com/go/simpleconnect.

By default, the Cisco Simple Connect feature is disabled on the Cisco CVR100W. The administrator needs to log in to web-based configuration utility of the CVR100W to manually enable this feature and configure its settings.

With the Cisco Simple Connect client application on their smart devices, users can interact with the Cisco Simple Connect tag and then quickly connect to the wireless network of the CVR100W.

System Requirements

Table 4 lists the system requirements for configuring the Cisco CVR100W.

Table 4. System Requirements

Features	Descriptions
Hardware requirements	A computer with functional network adapter (Ethernet connection) to run the web-based configuration utility
Software requirements	The setup wizard and web-based configuration utility are supported on the following web browsers: <ul style="list-style-type: none">• Microsoft Internet Explorer 6.0 or later• Mozilla Firefox 3.0 or later• Apple Safari 3.0 or later• Google Chrome 5.0 or later

Ordering Information

Table 5 lists ordering information for the Cisco CVR100W.

Table 5. Ordering Information

Part Number	Description
CVR100W-E-K9-EU	Cisco CVR100W Wireless-N VPN Router
CVR100W-E-K9-UK	Cisco CVR100W Wireless-N VPN Router

Note: The part numbers in the table are available for purchase only by Cisco partners and agents.

Warranty Information

This product comes with a 1-year limited hardware warranty with return-to-factory replacement. For additional information, see www.cisco.com/go/warranty.

For More Information

To find out more information about the Cisco CVR100W, visit www.cisco.com/go/cvr100w.



Americas Headquarters
Cisco Systems, Inc.
San Jose, CA

Asia Pacific Headquarters
Cisco Systems (USA) Pte. Ltd.
Singapore

Europe Headquarters
Cisco Systems International BV Amsterdam,
The Netherlands

Cisco has more than 200 offices worldwide. Addresses, phone numbers, and fax numbers are listed on the Cisco Website at www.cisco.com/go/offices.

Cisco and the Cisco logo are trademarks or registered trademarks of Cisco and/or its affiliates in the U.S. and other countries. To view a list of Cisco trademarks, go to this URL: www.cisco.com/go/trademarks. Third party trademarks mentioned are the property of their respective owners. The use of the word partner does not imply a partnership relationship between Cisco and any other company. (1110R)