

Canon

Delighting You Always



imagePRESS

1110/1135

PRODUCT OUTLINE



Business **Can** be simple

imagePRESS 1135/1110 Main Specification

		imagePRESS 1135	imagePRESS 1110
Type		Console type	
Printing method		Electrostatic image transfer	
Resolution		1,200 dpi x 1,200 dpi	
Gradation		256 gradations	
Grammage (g/m ²)	A4 single-sided	135 sheets / minute	110 sheets / minute
Continuous printing speed	A3 single-sided	77 sheets / minute	68 sheets / minute
Paper size		B5 - 330.2mm x 487.7mm (13 x 19.2 inch)	
Maximum printing area		323mm x 482.7mm	
Compatible paper thickness		52-300 g/m ²	
Auto Duplexing Paper Thickness		up to 300 g/m ²	
Paper feed method	Front loading	2000 sheets: 1 level (B5 - 13x19.2inch)	
	POD deck (optional)	4000 sheets: 1000 sheets x 2 levels, 2000 sheets x 1 level (B5 - 13x19.2inch). Up to 3 POD decks may be connected.	
Maximum feed capacity		14,000 sheets	
Power		Single-phase 220V30A+220V15A, 50Hz/60Hz	
Dimensions (width x depth x height)		1,380 x 808 x 1,373mm	

PAPER SUPPLY		
POD Decks (including Secondary)	SPECIFICATIONS	
	Paper Feeding Method	Air Separation Method
	Paper Size	12"x18", 11"x17", 12"x19.2", LGL, A4, A4R, EXEC, EXECL, Custom size: 7-1/8"x7-1/8" to 13"x19-1/4" (182mmx182mm to 330.2mmx487.7mm)
	Capacity	1,000 x 2 + 2,000 sheets (75g/m ²)
	Multiple-feeding Detection	Yes (Built-in)
Side Paper Deck-AF1	Capacity	3 x 2,000 sheets (75g/m ²)
	Multiple-feeding Detection	Optional, requires Paper Detection Unit
	Power Supply	AC220-240V, 5A, 50/60Hz

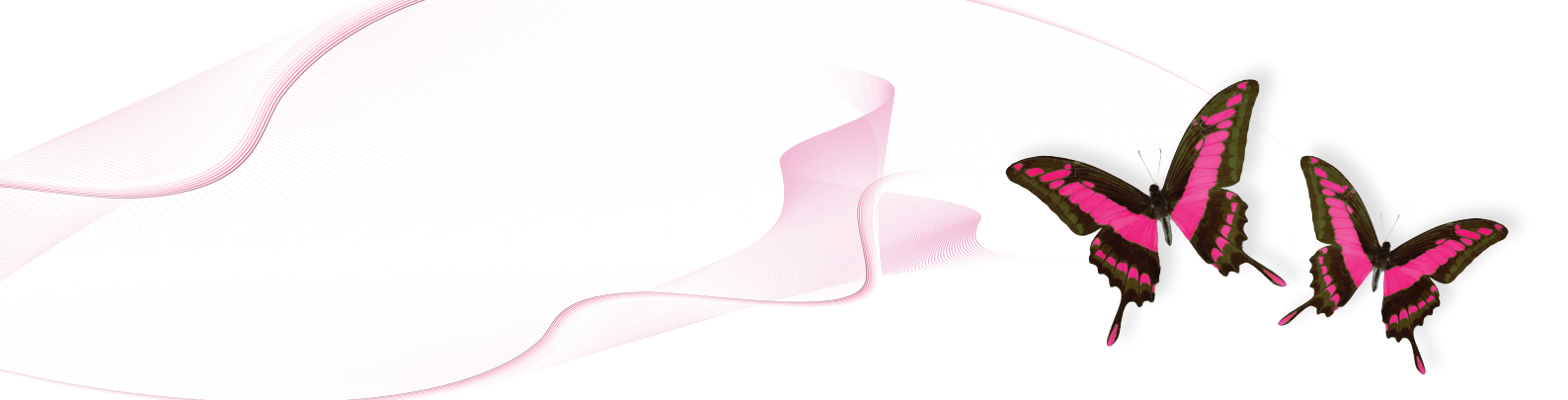
COLOUR IMAGE READER (COPIER MODULE)		
Automatic Document Feeder	SPECIFICATIONS	
	Document Size	B6 - A3, STMTL -11"x17"
	Input Capacity	300 sheets for all size (75g/m ²)
	Document Feeding	One path duplex scan
Color Image Reader	Mixed size	Yes
	Image Sensor	CMOS
	Platen	Fixed
	Acceptable Originals	Sheet, book, 3D object (Up to 2kg)
	Resolution	600 x 600dpi
	Gradations	256 gradation

MULTI-INSERTER		
Multi Drawer Document Unit-A1	SPECIFICATIONS	
	Type	Multi-Insert: Optional
	Paper Feeding Method	Air Separation Insertion Method
	Paper Size	12"x18", 11"x17", 12"x19.2", LGL, A4 A4R, EXEC, EXECL, manual size: 7-1/8"x 7-1/8" to 13"x19-1/4" (182x257mm to 330.2x487.7mm)
	Paper Material	Uncoated Paper: 52 to 300g/m ² Coated Paper: 80 to 240g/m ² , Emboss Paper, Tab Paper, Film Tab Paper kit is needed for Tab Paper (Tab Paper cannot be loaded in upper tray)
	Capacity	1,000 X 2 + 2,000 sheets (75g/m ²) total 4,000
	Escape Tray Capacity	160 sheets (80g/m ²), or less than 5/8" (16mm)
	Paper Sensor	1 level for 75g/m ² & 250 sheets in display
	Power Supply	AC220-240V, 2A, 50/60Hz
	Power Consumption	910W

PAPER FOLDING				
Paper Folding Unit	SPECIFICATIONS			
	Media	Supported paper width	Min	7-1/4" (182mm)
			Max	13" (330.2mm)
		Supported paper length	Min	7-1/4" (182mm)
			Max	19.2" (487.7mm)
			Min	52g/m ²
		Supported weight	Max	300g/m ²
	Power	Power source	spec	Power supplied from Finisher/ Saddle Finisher
				Ave. wattage 150W
				Max. wattage 200W

PLAIN / SADDLE FINISHER - AF/AG SERIES			
Finisher	SPECIFICATIONS		
	Number of Trays		2
	Tray Capacity	Tray A	3000 Sheets (80g/m ²)
		Tray B	2000 Sheets (80g/m ²)
	Paper Weight		52 to 300g/m ²
Saddle Finisher	Paper Size		LTR/A4R, LGL/B4, 11"x17" / A3, 450x320mm (SRA3), 12"x18" / 305x457mm, 13"x19"
	Staple Position		Corner & Double Stapling
	Maximum Stapling Capacity		Corner & Double Stapling - 100 Sheets (80g/m ²)
	Number of Trays		3
	Tray Capacity	Tray A	3000 Sheets (80g/m ²)
		Tray B	2000 Sheets (80g/m ²)
		Tray C	Unlimited (Lower tray)
	Paper Weight		52 to 300g/m ²
	Paper Size		LTR/A4R, LGL/B4, 11"x17" / A3, 450x320mm (SRA3), 12"x18" / 305x457mm, 13"x19"
	Staple Position		Corner & Double Stapling
	Maximum Stapling Capacity		Corner & Double Stapling - 100 Sheets (80g/m ²)
			Saddle Stitching - 25 Sheets

BOOKLET TRIMMER (1 WAY & 3 WAYS)		
Booklet Trimmer	SPECIFICATIONS	
	Mode	Trim or bypass
	Media size Max size (WxD)	13"x19.2" (330.2x487.7mm), 12"x18", 13"x19.2"(330.2x487.7mm), 11"x17", LGL, A4R
		Min size (WxD) 8-3/8"x11" (210x279.4mm), 12"x18", 13"x19.2"(330.2x487.7mm), 11"x17", LGL, A4R
	Media weight	52 to 300g/m ²
	Type of media	Plain, Coated, Special
	Power supply	Supplying from Saddle Finisher-AF2
	Cutting width (1 way)	One side:2-20mm (0.08" - 0.78")
	Cutting width (3 way)	Top and bottom: 2 to 15mm (0.08" - 0.59") *Minimum finishing size from top and bottom is 7-1/2" (190mm)
	Paper waste capacity	About 750 pcs each (15mm cut both top and bottom, A4, 75g/m ²) * "V shape" of a waste is considered as 1pcs of a waste. 750 pcs of waste is equivalent in 1,500 sheets (75g/m ²) of pages of a book. Waste box can hold up to about 750 pcs both top and bottom each (Approx. 1,500 sheets (75g/m ²) as folded book)
	Max capacity of a delivery conveyer	30 books (Book size A4, 40 sheets, 75g/m ²)



HIGH CAPACITY STACKER

High Capacity Stacker		SPECIFICATIONS	
Tray		Output Tray	
Stacking System		Stacker Tray (Flattening and Elevating)	
Stacking Orientation		Stacked in the same way as output from the connected device	
Paper Size	Output Tray	13"x19", 12"x18", 11"x17" LGL, LTR, LTRR, STMTR, 304.8x482.6mm, 320x450mm, 330.2x482.6mm, A3, B4, A4, A4R, A5R, B5, B5R	
	Stack Tray	13"x19", 12"x18", 11"x17", LGL, LTR, LTRR, 320x450mm, 330.2x482.6mm, A3, A4, B4, B5	
Paper Weight		52 to 300g/m ²	
Number of Pin		1	
Mode		Offset stacking for plots	
		Non-offset stacking	
		Stacking onto the output tray	
Stacking Capacity	Output Tray	1000 Sheets (80g/m ²)	
	Stack Tray	5000 sheets (80g/m ²) (A3 size)	
		10000 sheet (80g/m ²) (A4 size)	

PROFESSIONAL PUNCHER

SPECIFICATIONS			
Paper type	Max (WxL)	11-5/8"x8-1/2" (297x216mm)	
	Min (WxL)	11"x8-3/8" (279x210mm)	
	Weight	75 to 216 g/m ² plain paper	
Chip Tray Capacity		25,000 sheets or more of 75g/m ² with four holes	
Die Set	Punch Patterns	A4	3H, 5H, Velo Bind 11H, Plastic Comb 19H, Twin Loop 21H/32H, ProClick 32H, Colour Coil 44H
Paper Size		B5 - 13" x 19.2"	

PERFECT BINDER

Product Feature Glue binder using hotmelt on small glue tray, cutter to cut 3-side by rotating booklet

SPECIFICATIONS	
Number of booklet sheets / Mode	Content page: 10-200 sheets (Plain paper) + front sheet : 1 sheet 3-side cut, 1- side cut or no cut (Max. 297mm)
Content size	Vertical and horizontal ratio: 1.25 - 1.5 A4, B5, 9"x12", LTR, EXEC, 8-7/8"x12-9/16" (225x320mm [SRA4]), 8-7/8"x12-1/4" (226x310mm) Recommended size: A4, B5, 9"x12", LTR, EXEC, 8-7/8"x12-9/16" (225x320mm [SRA4]), 8-7/8"x12-1/4" (226x310mm [Extra A4])
Front Size	A3, B4, 13"x19", 12"x18", 11"x17", 12-5/8"x17-11/16" (320x450mm [SRA3])
Paper Weight and number of content sheets (g/m ²)	Thin paper (52-63g/m ²): 30-200 sheets Plain paper (64-80g/m ²): 10-200 sheets Plain paper (81-90g/m ²): 10-150 sheets Thick paper (91-105g/m ²): 10-200 sheets Thick paper (106-163g/m ²): up to 10 sheets as inserted paper
Paper Weight of front sheets (g/m ²)	Accept more than 251g/m ²
Finishing size (after cutting)	Trimming direction 1-side: 6.5-49.5mm (Adjustment =+/-0.5mm) 2-side: 6.5-39.5mm (Adjustment =+/-0.5mm) Min. 138x203mm - Max. 216x297mm
Combination with content front sheet	Recommended combination A4 finishing: Content sheet = A4/SRA4, Front sheet = SRA4 LTR finishing: Content sheet = 9"x12", Front sheet = SRA4 B5 finishing: Content sheet = A4, Front sheet = A3 A5 finishing: Content sheet = B5, Front sheet = B4
Capacity of glue tray	Approx. 380g (more than 135 sets when binding 100 sheets by A4 (80g/m ²), additional of glue is continuous spec)
Capacity of chip tray	A4 (80g/m ²) -> B5 finishing: 100 sheets x more than 15 sets
Stack number of stack tray	127mm (Max. thickness of booklet: 25mm) or less than 1000 sheets as total papers. More than 9 sets when binding 100 sheets
Power supply	AC220-240V, 50/60Hz, 2.6A
Max power consumption	Less than 623W

WEIGHTS / DIMENSIONS

imagePRESS 1135/1110	WIDTH	DEPTH	HEIGHT	WEIGHT	WIDTH	DEPTH	HEIGHT	WEIGHT
MARKING ENGINE	MM			KG	INCH			Lb.
imagePRESS 1135/1110 Marking Engine	1,380	800	1,040	500	54.3"	31.5"	40.9"	1,101 lb.
POD Deck-C1	745	792	1,095	226	29.3"	31.2"	43.1"	498 lb.
Secondary POD Deck-C1	811	792	1,095	226	31.9"	31.2"	43.1"	498 lb.
Paper Deck-AF1 (MULTI DRAWER)	950	800	1,098	150	37.4"	31.5"	43.2"	330 lb.
Multi Drawer Document Insertion Unit-A1	1,079	792	1,095	251	42.5"	31.2"	43.1"	553 lb.
Document Insertion Unit-F1	701	793	1,397	55	27.6"	31.2"	55.0"	121 lb.
Saddle Finisher-AF2	800	792	1,180	180	31.5"	31.2"	46.5"	396 lb.
Finisher-AF1	800	792	1,180	130	31.5"	31.2"	46.5"	286 lb.
Saddle Finisher-AG2	863	765	1,040	80	34.0"	30.1"	40.9"	176 lb.
Finisher-AG1	749	765	1,040	50	29.5"	30.1"	40.9"	110 lb.
High Capacity Stacker-E1	997	792	1,362	210	39.3"	31.2"	53.6"	463 lb.
Perfect Binder-C1	920	783	1,300	306	36.2"	30.8"	51.2"	674 lb.
Paper Folding Unit-E1	336	793	1,190	65	13.2"	31.2"	46.9"	143 lb.
Booklet Trimmer-D1	1,569	770	1,040	152	61.8"	30.3"	40.9"	335 lb.
Two-Knife Booklet Trimmer-A1	536	770	1,040	145	21.1"	30.3"	40.9"	319 lb.
Professional Puncher-B1	305	800	1,040	80	12.0"	31.5"	40.9"	176 lb.
Professional Puncher Integration Unit-A1	250	792	1,040	40	9.8"	31.2"	40.9"	88 lb.