

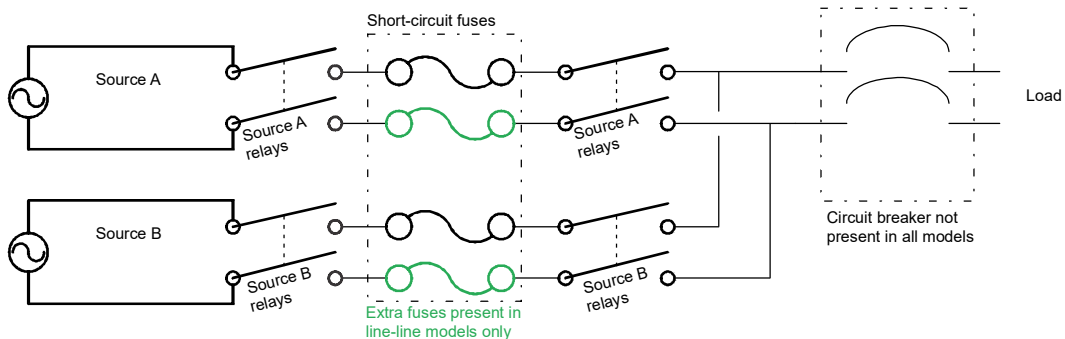
# Automatic Transfer Switch AP4423

## Overview

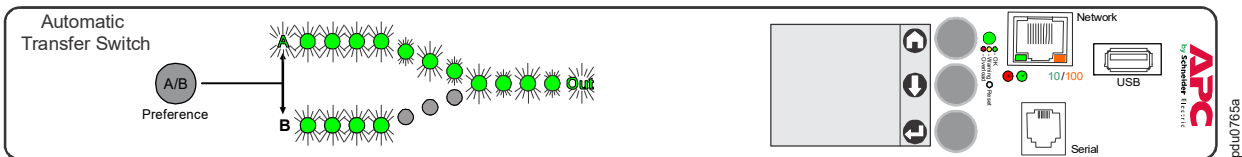
The APC by Schneider Electric Rack Automatic Transfer Switch (ATS) provides reliable, redundant power to single-corded equipment loads, such as servers. The Rack ATS has two input power cords supplying power to the connected loads. If the primary source becomes unavailable or out of the selected range, the Rack ATS will seamlessly source power from the secondary source without interrupting critical loads.

The Rack ATS has built-in network connectivity, which allows for remote management via Web, Telnet, SNMP, SSH or StruxureWare Data Center Expert<sup>®</sup> interfaces.

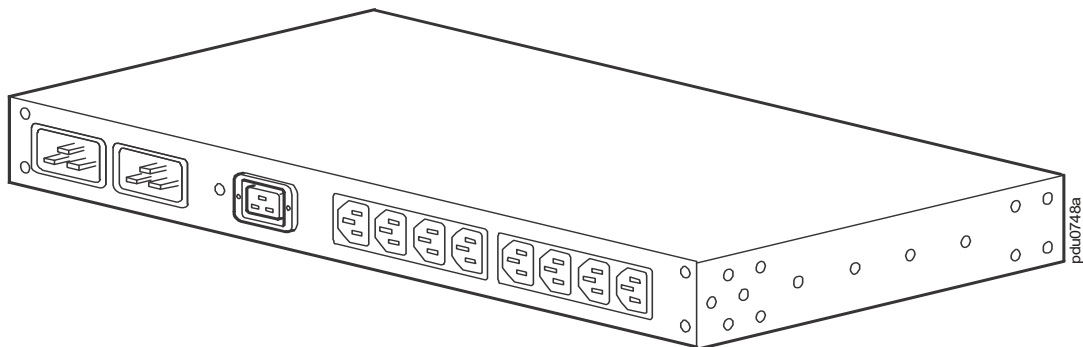
## ATS schematic



## Front



## Rear



**Inlets:** The two (2) C20 inlets support the connection of two power cords (not provided) to link the ATS to two separate power sources (A, B). The switch draws power from the preferred source and automatically switches to the secondary source when necessary.

**Outlets:** The outlets connect the ATS to equipment in the rack or enclosure, providing a redundant source of power to the connected equipment. The switch has eight (8) C13 outlets and one (1) C19 outlet.

# Specifications

## Electrical

Nominal input voltage	230 Vac
Acceptable input voltage	±10% of nominal
Input frequency	50/60 Hz
Input connectors	Two (2) C20 inlets
Output connectors	Eight (8) C13 outlets One (1) C19 outlet
Maximum output current (outlet)	10 A–C13 16 A–C19 10 A–gang
Maximum output/input current	16 A
Overload protection	
Internal	Not provided with unit
External (recommended)	16 A facility provided
Transfer time	10 ms maximum (high sensitivity, 50–60 Hz) 12 ms maximum (low sensitivity, 50–60 Hz)
Short circuit current rating	10 kA

## Physical

Dimensions (H x W x D)	43.7 x 431.8 x 236.2 mm (1.72 x 17.00 x 9.30 in)
Shipping dimensions (H x W x D)	114.3 x 600.2 x 355.6 mm (4.50 x 23.63 x 14.00 in)
Weight	3.74 kg (8.25 lb)
Shipping weight	5.51 kg (12.15 lb)

## Environmental

Maximum elevation (above MSL)	
Operating	0 to 3000 m (0 to 10,000 ft)
Storage	0 to 15 000 m (0 to 50,000 ft)
Temperature	
Operating	–5 to 45°C (23 to 113°F)
Storage	–25 to 65°C (–13 to 149°F)
Humidity	
Operating	5 to 95%, non-condensing
Storage	5 to 95%, non-condensing

## Compliance

EMC	EMC Directive 2014/30/EU
Safety	UL - EU / CE UL/EN/IEC 60950-1 LVD 2014/35/EU
Approved for IT Power Systems	Yes

Customer support and warranty information are available on the website, [www.apc.com](http://www.apc.com).